

Nintendo

GAME BOY™

DMG-ML-USA-1

SUPER MARIO LAND™

INSTRUCTION BOOKLET

This official seal is your assurance that Nintendo has reviewed this product and that it has met our standards for excellence in workmanship, reliability and entertainment value. Always look for this seal when buying games and accessories to ensure complete compatibility with your Game Boy System.



Thank you for purchasing this Nintendo® GAME BOY™ Super Mario land™ Game Pak.

Before you start play, please read this instruction booklet carefully and follow the correct operating procedures. Keep this instruction booklet safe for future reference.

CONTENTS

STORY	3
1. USING THE CONTROLLER (Names and Functions of Parts)	4
2. PLAYING THE GAME	6
3. TECHNIQUE	8
4. SUPER MARIO SECRET TECHNIQUES	11
5. INTRODUCING THE CHARACTERS	13

Cautions During Use

- 1) If you play for long periods, take a 10 to 15 minute break every hour or so.
- 2) This equipment is precision-built. Do not use or store it under conditions of extreme temperature, or subject it to rough handling or shock. Do not disassemble the unit.
- 3) Do not touch the terminals or let them come into contact with water, as this can cause malfunction.
- 4) Do not wipe this equipment with volatile solvents such as thinner, benzene or alcohol.
- 5) Store the Game Pak in its protective case when not in use.

©1989 Nintendo of America Inc.

™ & ® Trademarks of Nintendo of America Inc.

STORY

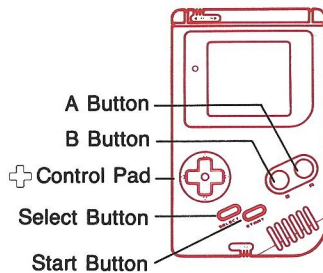
Once upon a time, there was a peaceful world called Sarasaland. In this world there were 4 kingdoms named Birabuto, Muda, Easton and Chai. One day, the skies of Sarasaland were suddenly covered by a huge black cloud. From a crack in this cloud, the unknown space monster Tatanga emerged to try to conquer Sarasaland. Tatanga hypnotized the people of all the kingdoms so that he could control them in any way he liked. In this way he took over Sarasaland. Now, he wants to marry Princess Daisy of Sarasaland and make her his queen.

Mario came to know of these events, and has started on a journey to the Chai Kingdom where Princess Daisy is held captive, in order to restore peace to Sarasaland.

Can Mario defeat Tatanga, release the people from his interstellar hypnosis, and rescue Princess Daisy? It's all up to you and Mario's skill. Go for it Mario!!

1. USING THE CONTROLLER

Names and Functions of Parts



+ Control Pad



- Walk to the right.
(Press the B Button at the same time to accelerate.)
- Squat down (Super Mario).
- Walk to the left.
(Press the B Button at the same time to accelerate.)

A Button

Jump

—Pressing the A Button will make Mario Jump.

Fire torpedo or Missile

—In the shooting areas, you can fire missiles or torpedoes.

B Button

Run

- By accelerating then jumping, Mario can jump higher.

Super ball

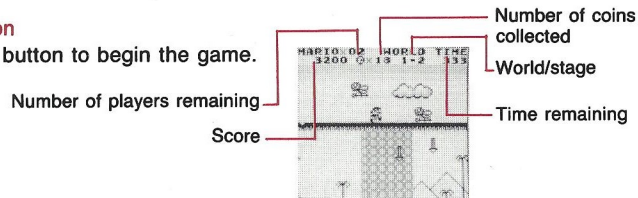
- If Mario picks a super flower, he can throw a superball.
- *The superball allows Mario to defeat some enemies or obtain coins.

Fire torpedo or missile

- In the shooting areas, Mario can fire torpedoes or missiles.

Start Button

Press this button to begin the game.



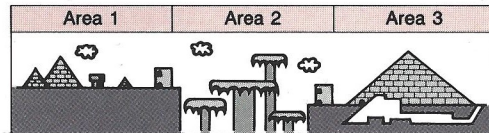
Pause Function

If you want to pause the game, press the START Button. To resume playing, press the START Button again and the game will continue.

2. PLAYING THE GAME

In this game the action moves from left to right. Mario goes through a series of adventures in Sarasaland which consists of 4 kingdoms – Birabuto, Muda, Easton and Chai. The kingdoms are each divided into 3 areas, with the boss of each kingdom living in the 3rd area. Mario must pass through each area within a fixed time. There are a variety of enemies waiting to attack him in each of the worlds, so he has to use all his running and jumping abilities as well as piloting a submarine and an airplane. Mario's ultimate destination is the Chai Kingdom, where Princess Daisy is held prisoner.

Example: World 1



World 1 Birabuto Kingdom
World 2 Muda Kingdom
World 3 Easton Kingdom
World 4 Chai Kingdom

*Area 3 in World 2 and World 4 are automatic scroll shooting areas.

*After Mario beats the boss of a world, he can enter the next world by stepping on the switch in front of the gate.

•Time

As soon as Mario starts, the time indication on the upper right of the screen begins to decrease. The time remaining when he arrives at the goal is multiplied by 10 and added to the score.

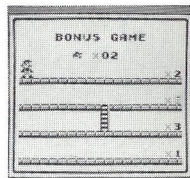
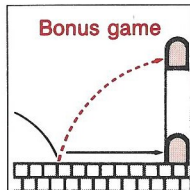
•Goal

At the end of each area there are an upper and a lower entrance. If Mario can enter the upper entrance he can play the bonus game.

•Bonus game

Press the B Button when you think the time is right, and Mario will walk to the right.

At the right side, 4 bonuses await Mario; 1UP, 2UP, 3UP and a flower.



Bonus screen

3. TECHNIQUE

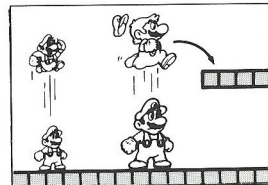
•Jump

Mario and Super Mario both jump the same height.

*The amount of time you hold the A Button determines the height of the jump.

*If you press either the Left or Right sides of the + Control Pad in mid jump, Mario will move in the direction you press.

*Press the B Button to make Mario run, and he can jump even higher.



Press the right side of the + Control Pad while Mario is in the air to jump on top of things.

•Bonus Characters



1UP heart

Take a 1UP heart and you gain an extra Mario.



Coin

Collect 100 coins and you gain an extra Mario.

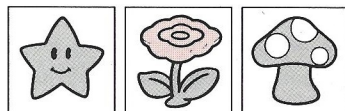


Mystery Blocks.

You never know what's waiting for you. Expect something special!

•Increasing Mario's Power

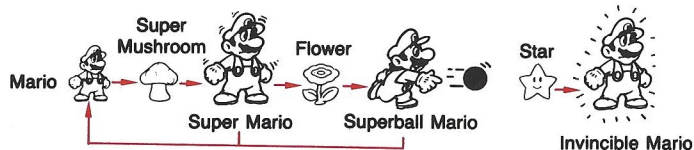
*Hidden inside blocks and in other places, you can find 3 types of power up items – stars, flowers and super mushrooms. Find them and pick them up to increase Mario's power.



Star

Flower

Super Mushroom

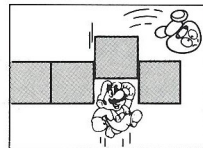


- *If Super Mario or Superball Mario are touched by an enemy, they simply go back to being a regular Mario.
- *After becoming a regular Mario again, Mario will be invincible for a short time. During this time Mario will blink.
- *If Mario takes a super mushroom, he is transformed into Super Mario and can destroy blocks.
- *If Super Mario picks a flower, he can throw superballs. If a superball hits a wall or block, it bounces back at an angle of 90 degrees. It can be used to defeat enemies or collect coins. The superball disappears after a fixed period of time.

*If Mario takes a star, he starts blinking and he will be invincible for a short while. During this time, he can't be beaten by the enemy.

•Defeating the Enemy

*Enemies standing on blocks can be hit from below.
Most enemies on the ground can be defeated by jumping on them.



Hit from below



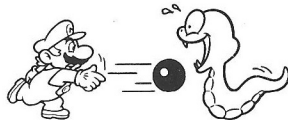
Jump on from above

*In the shooting area, you can defeat the enemy using torpedoes when underwater or missiles when airborne.

Using a missile in the shooting area.



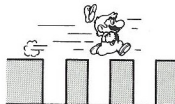
- *When Mario has a superbball, he can defeat enemies by throwing the superbball at them.




- *Invincible Mario can defeat most enemies by bumping into them with his body.
- *Watch out! Some of Mario's enemies can't be beaten by being stepped on, some are not affected by the superbball, and others are totally invincible.

•You lose a Mario

- *When Mario is touched by an enemy or engulfed by fire. (Super Mario goes back to being a regular Mario and the game continues.)
- *When Mario falls into a hole in the ground or underground.
- *When the time runs out.



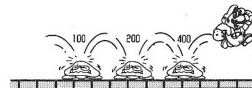
4. SUPER MARIO LAND SECRET TEQUINQUES

- *If Mario comes to a place where there are small holes in the ground, press the B Button and he can run across the holes without falling in. (B) + (+)
- *In some of the pipes, treasure rooms are hidden. When standing on a pipe, use the  Control Pad to go down and take a look.

- *Jumping in areas that look empty.

There are plenty of secrets to discover with coins and blocks appearing where you least expect them.

- *Get a high score by jumping on several enemies in a row.



- *Each coin is worth 100 points. Collect 100 coins and you gain not only a good score but also an extra Mario.
- * Break a block and you gain 50 points. Try to break them wherever you see them.
- * In some worlds there are lots of secret traps waiting for Mario such as floors that cave in when Mario walks on them and floors with poison needles that can kill Mario if he touches them.
- * You can continue once for each score of 100,000. If your score is over 100,000 points when your game is over, the title screen appears and the Continue message is displayed. Move the mushroom cursor using the SELECT Button. If you want to start from the beginning, move the cursor in front of START and press the START Button. If you want to continue your game, move the cursor in front of Continue and press the START Button.
- * After defeating Tatanga and rescuing Princess Daisy, the game is over. Press a button after the end and the mushroom cursor on the title screen turns into a Mario cursor, and the enemy-infested underworld begins.
- * To reset the game press the A, B, START and SELECT Buttons simultaneously.

5. INTRODUCING THE CHARACTERS

Daisy Princess

Daisy is being held captive by Tatanga. Mario must rescue her.

Sky Pop (Airplane)

Mario flies through the air in this missile armed airplane.

Marine Pop (Submarine)

Mario can travel any where he likes underwater in this torpedo armed submarine.

Upside Down (Headstand) Pakkun 400PTS

A pakkun flower that comes down from above. Take care that it doesn't bite Mario's head.

Pakkun Flower 100PTS

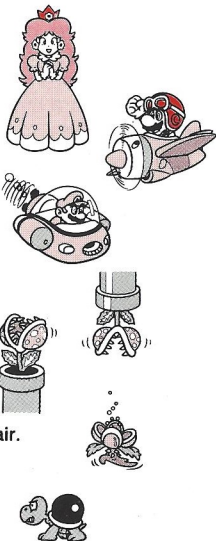
This man-eating plant grows out of pipes. Watch out because it sticks its head up quickly. You can't step on it from above.

Pompon Flower 800PTS

While walking around, this flower scatters poisonous pollen into the air.

Nokobon 100PTS

A turtle with a bomb on its back. It explodes after you jump on it, so be sure to avoid contact.



Chilibibo 100PTS

A timid mushroom that toddles along the ground.



Kumo 400PTS

This spider-like creature attacks Mario by jumping on him.



Tokotoko 400PTS

A stone statue that energetically shakes its fists as it runs around.



Nyololin 800PTS

This creature moves around in a cowardly manner, and when it sees Mario it blows poison balls at him.



Batadon 800PTS

A winged stone statue. It tries to crush Mario as it flies.



Mekabon 400PTS

A robot that attacks Mario with its head. It can be beaten by jumping on its head.



Suu 400PTS

This cave dwelling spider descends silently from above when Mario approaches.



Gao 800PTS

This stiff-bodied creature doesn't move. But it spits out fireballs aimed at Mario.



Ganchan

Rocks that fall suddenly from the sky. They are terrible if they hit and squash you, but useful because you can jump on one and let it take you for a ride. Ganchans can't be beaten.

Hiyoihoi 5,000PTS

The boss of the Easton Kingdom, Hiyoihoi evolved from a Tokotoko. It comes at Mario throwing Ganchans, so mind you don't get crushed. Jumping on Hiyoihoi won't defeat it but 10 superballs will do the trick.

King Totomesu 5,000PTS

The boss of the Birabuto Kingdom. It jumps up and down spitting out fire. You can't defeat it by jumping on it. Use 5 superballs.

Yurarin 400PTS

This underling of Dragonzamasu lives in the water and trembles as it swims along. 2 torpedoes will defeat it

Torion 100PTS

These man-eating fish always swim in groups of three. You can defeat them with a single torpedo.

Honen 100PTS

The skeleton of a Torion after it's been eaten by Tatanga. It always flies vertically up from the water. A superbball can't stop it.



Yurarin Boo 400PTS

This is the big brother of Yurarin. It moves up and down spitting out fireballs, and a superbball has no effect on it.

Gunion 800PTS

The Gunion shakes up and down in the water. Take care because if you hit it with 2 torpedoes, it splits into two and attacks.

Dragonzamasu 5,000PTS

The boss of the Muda Kingdom, Dragonzamasu is protected by Tamao. It moves up and down and spits out fire. Mario can defeat it with 20 torpedoes.

Tamao

This indestructible life form lives in Dragonzamasu's room to guard his boss.

Fly 400PTS

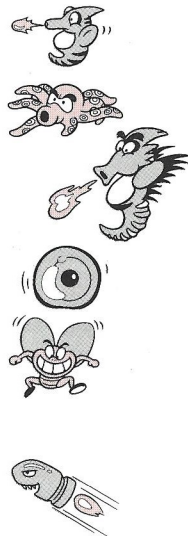
This blood-sucking fly is always flying around. You can defeat it down by jumping on it.

Bunbun 800PTS

Bunbun flies around in the sky dropping arrows.

Gira 400PTS

Gira is a missile that takes off straight from a launch pad. Mario can defeat it by stepping on it.



Roketon 400PTS

An attack plane piloted by Tatanga's soldier guards. It fires cannonballs at the Sky Pop. You can destroy it with a single missile.

Pionpi 800PTS

Hopping about and persistently dogging Mario, no matter how many times you jump on Pionpi, he keeps coming back to life. But you can defeat him with a superball.

Chicken 400PTS

A war bird kept by Tatanga, Chicken meanders and glides towards Mario. One missile will defeat it.

Chikako (Glitter) 800PTS

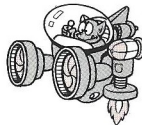
This object floats glittering in the sky. Its body is surrounded by a protective barrier, so 10 missiles are needed to defeat him.

Blorkinton 5,000PTS

The boss of the Chai Kingdom. Because of his shyness, he constantly hides inside a cloud. Up to now nobody has ever seen what he looks like. You can defeat him with 20 missiles.

Tatanga the Mysterious Spaceman 5,000PTS

This unknown space monster appeared suddenly from deep space. He drives the war robot Pagosu, and attacks with scattered, meandering rockets.



90-DAY LIMITED WARRANTY NINTENDO GAME PAKS

90-DAY LIMITED WARRANTY:

Nintendo warrants to the original consumer purchaser that this Nintendo Game Pak ("PAK") shall be free from defects in material and workmanship for a period of 90 days from date of purchase if a defect covered by this warranty occurs during this 90-day warranty period, Nintendo will repair or replace the PAK, at its option, free of charge.

To receive this warranty service:

1. DO NOT return your defective Game Pak to the retailer.
2. Notify the Nintendo Consumer Service Department of the problem requiring warranty service by calling: 1-800-255-3700.
Our Consumer Service Department is in operation from 6:00 A.M. to 6:00 P.M. Pacific Time, Monday through Saturday. Please Do Not send your Pak to Nintendo before calling the Consumer Service Department.
3. If the Nintendo Service Representative is unable to solve the problem by phone, you will be provided with a Return Authorization number. Simply record this number on the outside packaging of your defective PAK (Be sure that your packaging is at least 4 inches by 6 inches as many shipping companies will not ship anything smaller), and return your PAK FREIGHT PREPAID AND INSURED FOR LOSS OR DAMAGE, together with your sales slip or similar proof-of-purchase within the 90-day warranty period to:

In the United States:
Nintendo of America Inc.
Consumer Service Department
4820-150th Avenue N.E.
Redmond, WA 98052
RA # _____

In Canada:
Nintendo of Canada Ltd.
110-13480 Crestwood Place
Richmond BC V6V2J9
RA # _____

This warranty shall not apply if the PAK has been damaged by negligence, accident, unreasonable use, commercial use, modification, tampering, or by other causes unrelated to defective materials or workmanship.

REPAIR/SERVICE AFTER EXPIRATION OF WARRANTY:

If the PAK develops a problem requiring service after the 90-day warranty period, you may contact the Nintendo Consumer Service Department at the phone number noted at left. If the Nintendo Service Representative is unable to solve the problem by phone, you will be advised of the approximate cost for Nintendo to repair or replace the PAK and will be given a Return Authorization number.

You may then record this number on the outside packaging of the defective PAK (Be sure that your packaging is at least 4 inches by 6 inches as many shipping companies will not ship anything smaller) and return the defective merchandise, FREIGHT PREPAID AND INSURED FOR LOSS OR DAMAGE, to Nintendo, and enclose a money order payable to Nintendo for the cost quoted you. (Repairs may also be charged on a VISA or MASTERCARD credit card.)

If after personal inspection, the Nintendo Service Representative determines the PAK cannot be repaired, it will be returned and your payment refunded.

WARRANTY LIMITATIONS:

ANY APPLICABLE IMPLIED WARRANTIES, INCLUDING WARRANTIES OF MERCHANTABILITY AND FITNESS FOR A PARTICULAR PURPOSE, ARE HEREBY LIMITED TO NINETY DAYS FROM THE DATE OF PURCHASE AND ARE SUBJECT TO THE CONDITIONS SET FORTH HEREIN. IN NO EVENT SHALL NINTENDO BE LIABLE FOR CONSEQUENTIAL OR INCIDENTAL DAMAGES RESULTING FROM THE BREACH OF ANY EXPRESS OR IMPLIED WARRANTIES.

The provisions of this warranty are valid in the United States and Canada only. Some states/provinces do not allow limitations on how long an implied warranty lasts or exclusion of consequential or incidental damages, so the above limitations and exclusion may not apply to you. This warranty gives you specific legal rights, and you may also have other rights which vary between states/provinces.



Nintendo of America Inc.
P.O. Box 957, Redmond, WA 98073-0957 U.S.A.

PRINTED IN JAPAN