

Nintendo

DMG-W2-USA-1

GAME BOY[®]

MEGA MAN II[®]

INSTRUCTION BOOKLET

WARNING: PLEASE CAREFULLY READ THE CONSUMER INFORMATION AND PRECAUTIONS BOOKLET INCLUDED WITH THIS PRODUCT BEFORE USING YOUR NINTENDO® HARDWARE SYSTEM, GAME PAK OR ACCESSORY. THIS BOOKLET CONTAINS IMPORTANT SAFETY INFORMATION.

This official seal is your assurance that Nintendo has reviewed this product and that it has met our standards for excellence in workmanship, reliability and entertainment value. Always look for this seal when buying games and accessories to ensure complete compatibility with your Nintendo product.

All Nintendo products are licenced by sale for use only with other authorized products bearing the Official Nintendo Seal of Quality ®



This product has been rated by the Entertainment Software Rating Board. For information about the ESRB rating, or to comment about the appropriateness of the rating, please contact the ESRB at 1-800-771-3772.

TABLE OF CONTENTS

A Special Message from Capcom.....	2
Safety Precautions	4
Getting Started.....	5
Time Trap.....	6
Controlling Mega Man.....	7
Terror Beneath the Earth.....	8
Mega Power.....	9-10
Mega Man's Best Friend.....	11-12
Using Your Password.....	13
Robot Masters.....	14
The Winner's Edge.....	15
90-Day Limited Warranty	19

SAFETY PRECAUTIONS

Follow these suggestions to keep your **Mega Man II** Game Pak in perfect operating condition.

1. **DO NOT** subject your Game Pak to extreme temperatures, either hot or cold. Always store it at room temperature.
2. **DO NOT** touch the terminal connectors on your Game Pak. Keep it clean and dust-free by always storing it in its protective plastic case.
3. **DO NOT** try to disassemble your Game Pak.
4. **DO NOT** let your Game Pak come in contact with thinners, solvents, benzene, alcohol, or any other strong cleaning agents that can damage it.

GETTING STARTED

1. Insert your **Mega Man II** Game Pak into your Nintendo Game Boy and turn it on.
2. On the title screen, you can choose to begin a new game or use a password to continue a previous game.

To begin a new game, move the arrow next to **START**, then press **START** on your control pad.

To continue a previous game, see the *Using your Password* section later in this manual.

3. When the next screen appears, you will see mug shots of Dr. Wily's robot masters. Use the control pad to highlight the robot master you wish to battle, press the **A** button and get ready for action!
4. To end the game at any time, simply turn your Nintendo Game Boy off and remove your Game Pak.

TIME TRAP!

"Light to Mega Man! Light to Mega Man! Come in Mega Man!!!!

"Dr. Wily has broken into the Chronos Institute and stolen the experimental Time Skimmer. We tried tracking him on radar, but he simply vanished. My calculations show that he jumped approximately 37.426 years into the future. I have no idea what he plans to do, but your can be sure that he'll be back!

"In the meantime, Rush has sniffed out a few of Wily's robots guarding a subterranean passage. Get over there and check it out. And remember, let's be careful down there!

"Light out!"



CONTROLLING MEGA MAN

TO DO THIS:

To move left or right

To climb up or down

Jump

Slide

Fire your current weapon

DO THIS:

Press the control pad left or right.

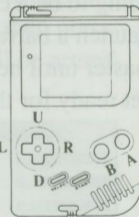
Press the control pad up or down.

Press the **A** button

Press the control pad down and hit the **A** button. Mega Man will slide in the direction he is facing

Press the **B** button .

Control Pad



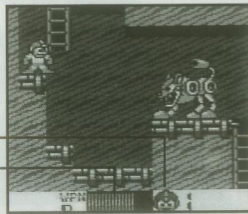
Select Start

TERROR BENEATH THE EARTH!

Lurking at the entrance to the underground cavern are four of Dr. Wily's most fiendish robots. Each of these angry androids has surrounded itself with a web of tin-plated terrors who want to mangle Mega Man! It's up to you to run, jump and climb past these metallic maniacs to the inner sanctum of the robot master. Once you arrive, it's going to be a cybernetic showdown and only one of you will survive. Launch a barrage of lethal lasers and keep on pounding the robot master until he's a mound of molten metal. Then grab his weapon and get ready for the next steel stompin' cyborg.

LIVES REMAINING

ENERGY LEVEL



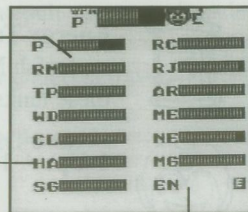
MEGA POWER!

As you annihilate Dr. Wily's raucous robots, you will gain their special weapons and add them to your own arsenal. You can view the various weapons you have collected by pressing the **START** button. When the weapon box appears, you will see all the weapons, energy tanks and extra lives you have collected so far. Press the control pad in any direction to select the weapon you wish to activate and then press the **A** button. When you return to the action, Mega Man will be armed with that weapon.

WEAPON ENERGY LEVEL

WEAPONS

ENERGY TANKS REMAINING



MEGA POWER!

As Mega Man smashes his way past waves of metallic meanies, he may find a variety of power-up items to recharge his energy.



Energy Pellets: These pellets increase Mega Man's energy level.



Weapon Capsules: These capsules increase the energy level of Mega Man's current special weapon.



Energy Tanks: These handy tanks of liquid energy replenish Mega Man's supply. Mega Man can store these tanks until needed.



1-Up: A 1-Up gives Mega Man one more life.

MEGA MAN'S BEST FRIEND

Every dog has his day and Rush is no exception! When Mega Man is in need of a little help, his canine companion is ready to leap to his side. But before Mega Man can transform Rush into a mighty machine, he must find the missing Rush adaptors. And the adaptors are in the hands of Dr. Wily's robot masters!!!

The 3 Rush adaptors are:

Rush Coil - Rush turns into a springboard to catapult you over obstacles.

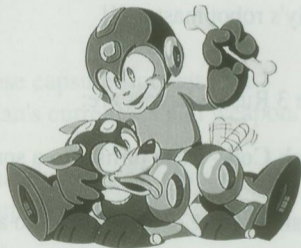
Rush Marine - Rush turns into a submarine for undersea travel.

Rush Jet - Rush becomes a jet sled for sky high travel.

MEGA MAN'S BEST FRIEND

Once you acquire an adaptor you can summon Rush to your side by pressing the **START** button. When the weapon box appears, press the control pad in any direction to select the machine you wish to use. Then press the **A** button to activate the machine.

When you return to the battle. Press the **B** button to call Rush and he will transport down next to you. Just jump on him and away you go!



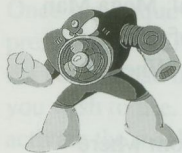
USING YOUR PASSWORD

As you reduce Dr. Wily's crafty creations into scrap metal, Mega Man may be rewarded with a secret password. Using a piece of paper and a pencil, copy the location of the dots in the password grid. When you have finished, place your password in a safe place.

The next time you play Mega Man II you can continue from where you received your password. Here's how:

1. On the title screen, move the arrow next to **PASSWORD** and press the **A** button.
2. When the empty password grid appears, use the control pad to move the brackets to the location of your first dot. Press the **A** button to place the dot. (To erase the dot, press the **A** button again.)
3. Once you have finished placing each of the dots in your password, press the **START** button. If the password is correct, the game will return you to where you received the password.

THE ROBOT MASTERS



Air Man



Hard Man



Needle Man



Top Man



Wood Man



Metal Man



Magnet Man



Clash Man

THE WINNERS EDGE

1. Each robot master is vulnerable to a certain type of weapon. If a robot master seems too hard to defeat using the normal cannon, you may need to acquire a special weapon to defeat him.
2. If your special weapon runs out of energy, pick up a weapon capsule while the special weapon is active and it will recharge slightly.
3. Practice firing from ladders and while jumping to blast sky-high machines.
4. If you get hit by an enemy, you will be invincible for a moment. Use this time to get by any tough obstacles.
5. If you can't jump over enemies, try sliding under them!

3-MONTH LIMITED WARRANTY (For Hardware, Game Play, & Accessories)

At the time of purchase, the product is warranted to be free from defects in materials and workmanship under normal use and handling. This warranty is limited to the original purchaser of the product. It does not cover damage caused by accident, misuse, or abuse. It also does not cover damage caused by unauthorized repairs or alterations. This warranty is void if the product is used for any purpose other than that intended by the manufacturer.

ADDITIONAL 3-MONTH LIMITED WARRANTY (Hardware Only)

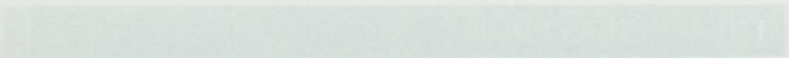
This warranty is in addition to the 3-month limited warranty provided for the hardware. It covers defects in materials and workmanship under normal use and handling. This warranty is limited to the original purchaser of the product. It does not cover damage caused by accident, misuse, or abuse. It also does not cover damage caused by unauthorized repairs or alterations. This warranty is void if the product is used for any purpose other than that intended by the manufacturer.

WARRANTY SERVICE OR REPAIR SERVICE AFTER EXPIRATION OF WARRANTY

After the expiration of the warranty period, we will continue to provide technical support and repair services for a limited time. The cost of parts and labor will be the responsibility of the customer. We will accept returned products for repair or replacement at our discretion. There is no charge for shipping and handling fees. We will ship the product back to the customer within a reasonable time frame.

WARRANTY LIMITATIONS

This warranty does not cover damage caused by accident, misuse, or abuse. It also does not cover damage caused by unauthorized repairs or alterations. This warranty is void if the product is used for any purpose other than that intended by the manufacturer. We are not responsible for any loss of data or other information stored on the product. We are not responsible for any damage to other equipment or property. We are not responsible for any consequential or incidental damages. This warranty is limited to the original purchaser of the product. It does not cover damage caused by fire, flood, or other natural disasters. It also does not cover damage caused by theft or loss. This warranty is void if the product is used in any country other than the United States.



1. Each robot master is vulnerable to a certain type of weapon.

2. If your special weapon runs out of energy, pick up a weapon

expands while the special weapon is active and it will recharge

3. Practice firing from ladders and while jumping to blast sky-high

4. Be careful not to get by any other obstacles

2. Learn to change over systems, try sliding under them!

Air Man

Hard Man

Needle Man

Lightning Man

Wood Man

Metal Man

Magnet Man

Clock Man

3-MONTH LIMITED WARRANTY (For Hardware, Game Paks, & Accessories)

Nintendo of America Inc. ("Nintendo") warrants to the original purchaser that the product (hardware, game paks and accessories) shall be free from defects in material and workmanship for a period of three (3) months from the date of purchase. If a defect covered by this warranty occurs during this three (3) month warranty period, Nintendo will repair or replace the defective product or component part, at its option, free of charge.

ADDITIONAL 3-MONTH LIMITED WARRANTY (Hardware only)

Nintendo warrants to the original purchaser that the hardware product shall be free from defects in material and workmanship for an additional three (3) months beyond the original 3-month warranty period described above. If a defect covered by this warranty occurs during this additional 3-month warranty period, Nintendo will repair the defective hardware product or component free of charge. The original purchaser is entitled to this additional 3-month limited repair warranty only if the Consumer Proof of Purchase Card (attached to the hardware packaging when sold) is returned promptly after the date of purchase to Nintendo by the original purchaser or the original purchaser's retailer.

WARRANTY SERVICE OR REPAIR/SERVICE AFTER EXPIRATION OF WARRANTY

You may need only simple instructions to correct any problem with your product.

Call the Consumer Assistance Hotline at: 1-800-255-3700 rather than going to your retailer. Hours of operation are 6 a.m. to 9 p.m., Pacific Time, Monday - Saturday, and 6 a.m. to 7 p.m., Pacific Time, on Sundays (times subject to change). If the problem cannot be solved over the telephone, you will be referred to the nearest NINTENDO AUTHORIZED REPAIR CenterSM or you will be offered express factory service through Nintendo. In some instances, it may be necessary for you to ship the complete product, FREIGHT PREPAID AND INSURED FOR LOSS OR DAMAGE, to the nearest service location.

WARRANTY LIMITATIONS

THIS WARRANTY SHALL NOT APPLY IF THIS PRODUCT: (a) IS USED WITH PRODUCTS NOT SOLD OR LICENSED BY NINTENDO (INCLUDING, BUT NOT LIMITED TO, NON-LICENSED GAME ENHANCEMENT DEVICES, ADAPTERS, AND POWER SUPPLY DEVICES); (b) IS USED FOR COMMERCIAL PURPOSES (INCLUDING RENTAL) OR IS MODIFIED OR TAMPERED WITH; (c) IS DAMAGED BY NEGLIGENCE, ACCIDENT, UNREASONABLE USE, OR BY OTHER CAUSES UNRELATED TO DEFECTIVE MATERIALS OR WORKMANSHIP; OR (d) HAS HAD THE SERIAL NUMBER ALTERED, DEFACED, OR REMOVED.

ANY APPLICABLE IMPLIED WARRANTIES, INCLUDING **WARRANTIES OF MERCHANTABILITY** AND FITNESS FOR A PARTICULAR PURPOSE, ARE HEREBY LIMITED IN DURATION TO THE WARRANTY PERIODS DESCRIBED ABOVE (3 MONTHS OR 6 MONTHS, AS APPLICABLE). IN NO EVENT SHALL NINTENDO BE LIABLE FOR CONSEQUENTIAL OR INCIDENTAL DAMAGES RESULTING FROM THE BREACH OF ANY IMPLIED OR EXPRESS WARRANTIES. SOME STATES DO NOT ALLOW LIMITATIONS ON HOW LONG AN IMPLIED WARRANTY LASTS OR EXCLUSION OF CONSEQUENTIAL OR INCIDENTAL DAMAGES, SO THE ABOVE LIMITATIONS MAY NOT APPLY TO YOU.

This warranty gives you specific legal rights, and you may also have other rights which vary from state to state. Nintendo's address is as set forth on the back cover of this manual.

This warranty is valid only in the United States

**NEED HELP WITH INSTALLATION,
MAINTENANCE, OR SERVICE?**



Nintendo®

**AUTHORIZED REPAIR CENTERS™
1-800-255-3700**

Nintendo of America Inc.
P.O. Box 957, Redmond, WA 98073-0957 U.S.A.

PRINTED IN JAPAN